



2022
Annual Report

To Our Ohana



In 2022, we began to navigate a post COVID-19 world. We experienced the bittersweetness of the world simultaneously continuing to open up and struggling to meet the basic needs of its inhabitants. Along with increased freedom, came intensified supply shortages, cuts in COVID funding, and escalated food insecurity amongst our neighbors.

Diligent as ever, we marveled at the incredible tenacity of our volunteers and team members as they worked tirelessly to find creative solutions to continue serving 10,000+ individuals every month. Through commitment, dedication, and passion, The Pantry continued to expand its reach and provide an essential lifeline of nutritious groceries every week for our neighbors across Oahu.

After introducing our custom-built app last year, we had the opportunity to move past the initial implementation stages and really began seeing its potential in action. We saw its ability to streamline and optimize our processes in action, and gathered rich data surrounding the client experience. Now, we are continuing the work to improve and optimize its features to better serve our clients. The technological tools we've been developing have supported us in distributing over 1.5 million pounds of custom-packed food over the course of 2022.

As we face the future with all of you, we are filled with gratitude and hope for what's to come. Some of the ways we look forward to expanding our services to our community over the next year include offering more consistent access to feminine hygiene products, exploring supplies of baby products, continued streamlining of our ordering and pick-up processes, building out our staff, and working closely with other like-minded organizations to better support our clients and neighbors. It is with the support and passion of our community that we are able to continue serving, supporting, and growing to meet the needs of our island ohana.

Mahalo nui loa to all of our volunteers, supporters, donors, staff, and clients for being a part of this journey.

With much aloha,



Jennine Sullivan
Executive Director



Gill Berger
President

Get to Know Us

Volunteer Features:

Mahalo to our volunteers for sharing their experiences!



Barb and Rich

“We choose to continue coming every day because we see that the systems and tools they use here make a big difference. It’s not just a casual food service for whoever can stop by. It’s a long-term essential for the thousands of clients whose families depend on the help. We’ve gotten to know hundreds of these families personally and are invested in their well-being.”



Olivia and Katie

“I see the difference The Pantry makes in the lives of the families and individuals that come through here. They really love getting groceries from local farms and stores, especially when they’re familiar ingredients to Asian or Native Hawaiian or Pacific Islander cuisine. When we’ve got local pork, kalo, watercress, or ulu, we get to see these faces light up all day long.”



Our Mission

Address Oahu’s hunger crisis by providing consistent and reliable access to nutritional food.

Our Vision

Be a model for food security and sustainability in Hawai’i.

About Us

The Pantry, by Feeding Hawai’i Together, is the only e-commerce food pantry in the country operating weekly, year-round, to provide free, nutritious food to the families of Hawai’i. For over 20 years, we have been serving our Oahu community with a “grocery store style” experience so customers can choose the food they want, when they need it, ultimately eliminating food waste.

We believe that people deserve to choose what groceries they’re bringing home and strive to be conscious of various dietary needs, allergies, and cultural factors. By developing innovative ways to provide quality, healthy food for free—so no one in our community goes hungry—The Pantry has become one of the largest food distribution services addressing the urgent issue of food insecurity in Hawai’i.

Our small but mighty staff is propelled by hundreds of weekly volunteers. You, our community, is what makes it possible to continue carrying out our mission through our work.

The Need

Navigating the new normals

As we continue marching ahead after COVID-19 changed the world as we once knew it, we've seen further food insecurity and a new wave of issues stemming from the pandemic. Many of the pandemic boosts to programs like SNAP and WIC provided a soft cushion for food insecurity during 2021, but we've begun to see the onslaught of those program cuts during 2022. Unfortunately, those were band-aids to the issue of deeply rooted food insecurity and no systemic support has been put in place for many of the keiki, kūpuna, and individuals with disabilities.

I'm the designated driver for my friends and I. I'm the last one allowed to have a license! We're all over 70 years old and living on fixed income, so The Pantry has been our consistent source of groceries for a while now. I don't know what we'll do once I can't drive anymore.

- Joanne W.



48%*

of households in Hawai'i are struggling to get by



91%

of our 2022 clients reported their households struggled with food insecurity



90%


of our clients have an annual income < \$42,000



* Source: AUW 2022 ALICE Report

2022 Impact

Connecting with our Community: With your support, in 2022 we were able to:



37,073+
Households served



95,010+
Individuals served



1,518,775+
Pounds of food distributed

Food Distribution Breakdown

Food Item	Pounds	% of total
Dry Goods	523,995	35%
Fresh Produce	493,434	32%
Eggs / Dairy / Frozen Protein	388,424	26%
Bread	82,202	5%
Household Supplies & Feminine Hygiene	30,720	2%
Total	1,518,775	



IN 2022 WE WERE SUPPORTED BY

96+
ORGANIZATIONS

1,700+
VOLUNTEERS

Our 2022 Community Impact



AVERAGE MONTHLY MEALS

105,557+



TOTAL MEALS PROVIDED

1,265,645+



Meet Our Clients

Mahalo to our clients for letting us share their stories!



Every week, our client walks over to pick up groceries for everyone living in their seven person household. Not only do they all help take care of sis's keiki, but there's a new baby joining them soon! As their family continues to grow, so does their need for healthy, nutritious, and steady food.

"During my sister's pregnancy, we were really worried about giving her the proper nutrition. But with The Pantry, we were able to take care of her and the new baby."

We've seen this little one for about a year now. They're living in a multi-generational home where everyone is pitching in what they can and sharing resources, food, support. Research has shown us how impactful nutritious food is for growth and development, and we were happy to help him celebrate his third birthday by ensuring they had enough groceries for a family dinner!

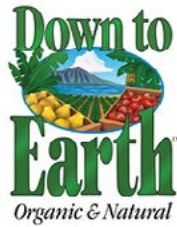


Uncle picks up food for his 98-year old mother-in-law that lives with his ohana. All three adults in the house help take care of each other, and nutrition is especially important for our kūpuna as they face health problems with age.

"Mom's got a lot of medical issues and is going to doctor appointments regularly. They keep telling us how important a nutritious meal is to her health. We couldn't do it without The Pantry."

Thank you to our partners & donors

Food partners that donated over 5,000 pounds of food in 2022



Financial Donors

Donations \$5,000 or more received in the calendar year of 2022

- A-1 A-LECTRICIAN, INC.
- ALTRES Foundation
- American Floor and Home Foundation
- ASEA Advancing Life Foundation
- Bank of Hawai'i Foundation
- The Ben and Miriam Lau Foundation
- Bluewater Mission
- The Cades Foundation
- City and County of Honolulu
- Edna Covalt Charitable Trust
- First Foundation Bank
- First Hawaiian Bank Foundation
- First Presbyterian Church of Honolulu
- Friends of Hawai'i Charities, Inc
- Goodfellow Bros. LLC
- The Harry and Jeanette Weinberg Foundation
- Hawai'i Community Foundation
- Hawai'i Public Health Institute
- The Henry and Colene Wong Foundation
- The James and Juanita Wo Foundation
- Jhamandas Watumull Fund
- The Keith & Polly Steiner Family Foundation
- League of Women Voters of Honolulu Education Fund, INC
- The Pettus Foundation
- The Resort Group LLC
- The Robert and Betty Wo Foundation
- The TJX Foundation, Inc
- Thomas and Sumie McCabe Foundation
- Women's Fund of Hawai'i

AND THANK YOU TO OUR INDIVIDUAL DONORS!

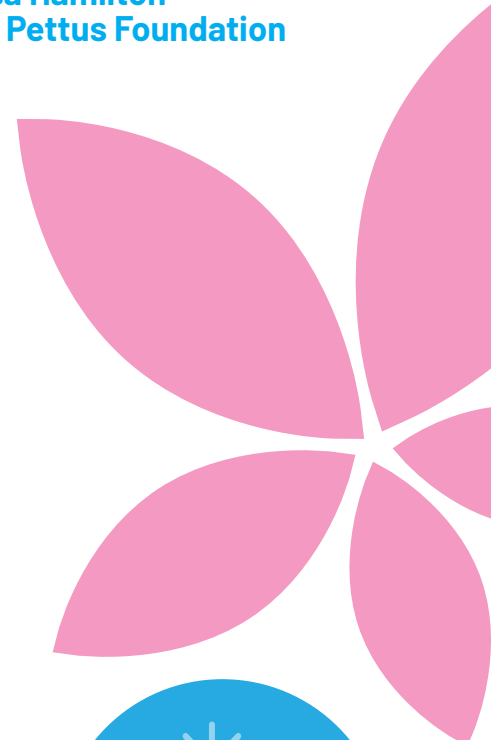
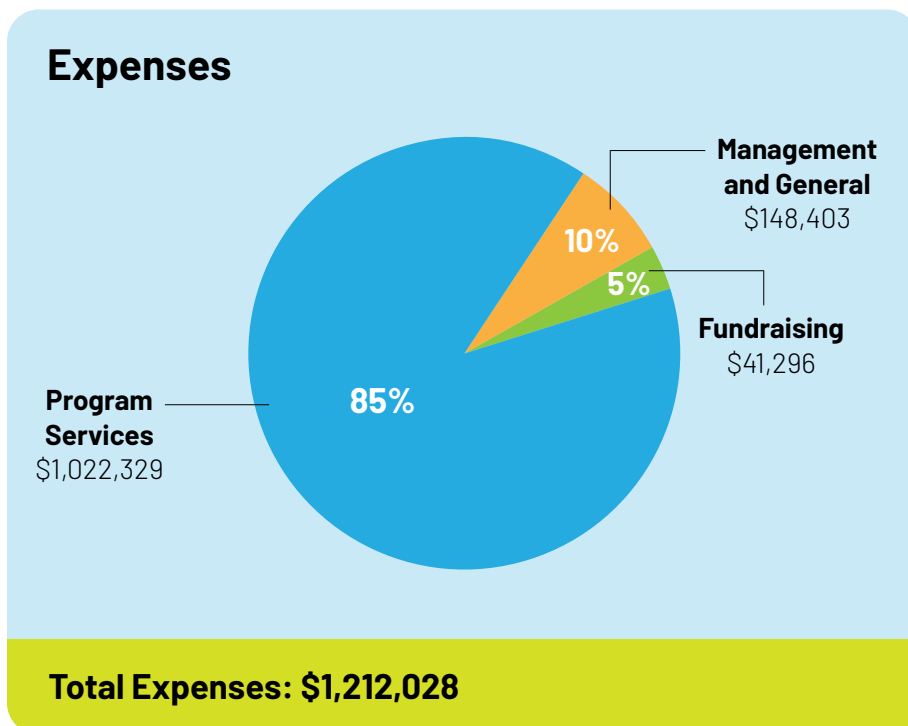
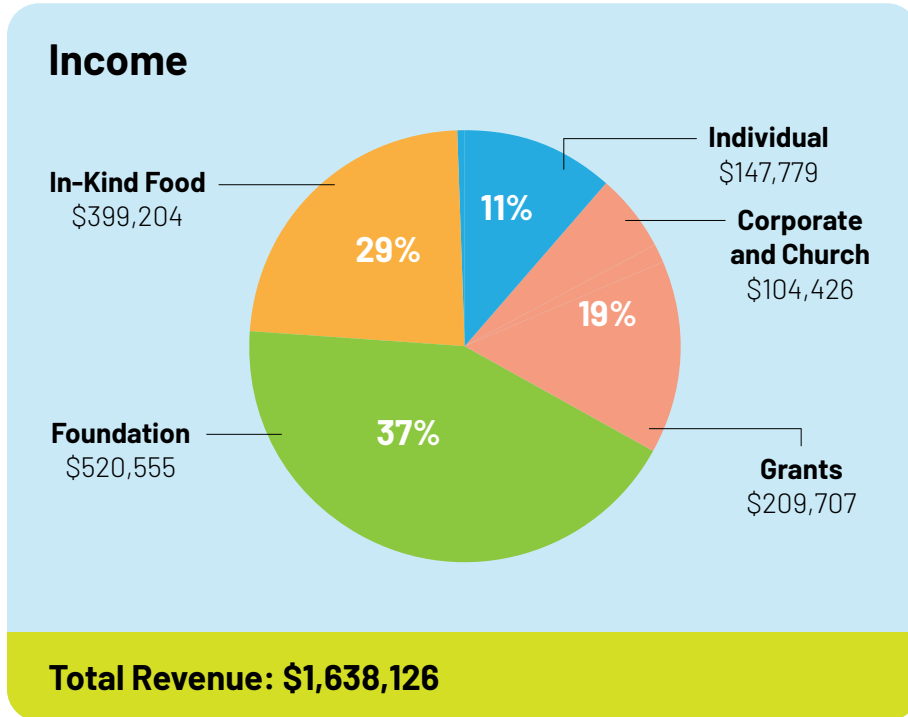


Financials

Financial Statement: Thanks to the generous support of our donors, The Pantry was able to provide healthy meals to more than 95,000+ individuals on Oahu.

“At the Pettus Foundation, we believe in meeting people where they’re at and addressing a myriad of intersectional needs like affordable housing, job placements, food access, and more. We are thrilled to be a supporting partner of The Pantry as their unique e-commerce platform upholds our values of dignity and accessibility for clients all across Oahu and are excited to support their programs that are feeding thousands of neighbors each month.”

**– Lisa Hamilton
The Pettus Foundation**



2022 Successes

As we reflect on 2022, we are excited to share some of our favorite moments with you all.



Expanded offerings of personal hygiene, baby, and household products by partnering with local organizations to round out what we can offer to our clients.

Continued cultivating new partnerships with individuals and groups in our community to further the mission and work. We are grateful for the 1,700+ volunteers from a wide variety of organizations - corporate, faith-based, higher education, and more, that continually show up for us.

Increased effort to educate local organizations about the food systems that exist and how they can join us in advocating for change at various levels.

Launched The Pantry app in summer of 2022 and have worked diligently to improve the client experience. By implementing this technological piece, we've been able to reach more people, improve our efficiency, decrease user error, and keep the dignity of our clients at the core of what we do.

Board of Directors*

Officers

Greg Rice - Chair
Founder/Owner of Solid Rock Group/Solid Rock Advisors; International RE firm

Gill Berger - President
First Foundation Bank

Paul Zukunft - Vice President
Retired United States Coast Guard admiral who served as the 25th Commandant of the Coast Guard

Chris Anjo - Treasurer
Vice President of Commercial Banking at First Hawaiian Bank

Larry Kantor - Secretary
Director of Real Estate, Hawai'i, Solid Rock Advisors

Directors

Darren Ishimura
Director of Grid Technologies, HECO

Peter Kang
Developer, Entrepreneur

Darrah Kauhane
Executive Director, Project Vision Hawai'i

Lauren Nahme
Vice President of Strategy and Innovation, Kamehameha Schools

Jonathan Steiner
Keith and Polly Steiner Family Foundation, CEO

Steve Sue
Social venturer and Chairman of Bizgenics Foundation

Alan Tang
Olomana Loomis ISC, CEO & Chief Strategy Officer

Phyllis Unebasami
Former Deputy State Superintendent

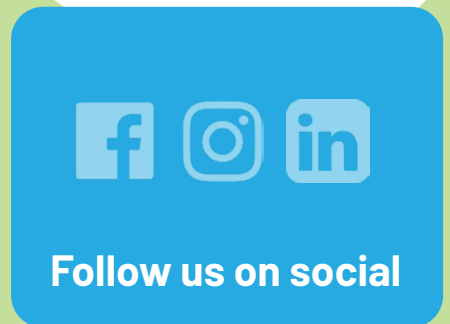
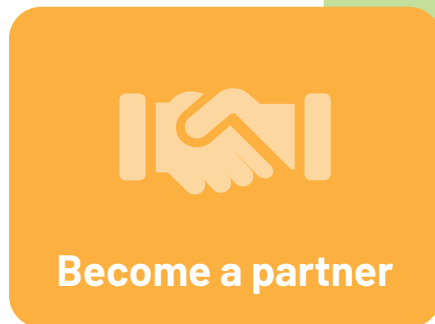
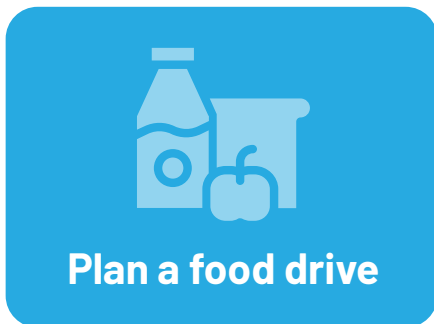
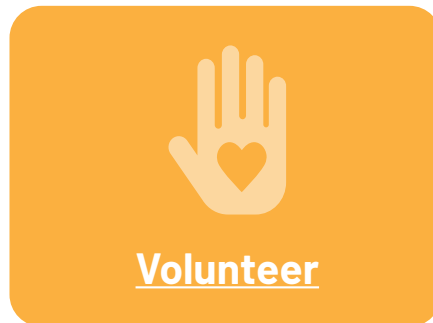
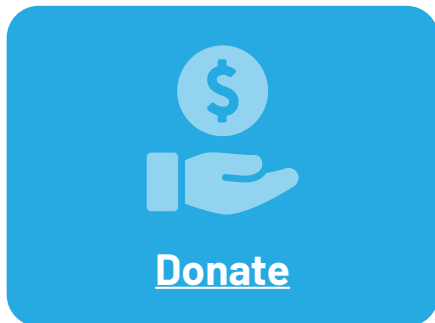
Dean Wang
Partner at Luminate Law

Paulette Wo
Advocate, Volunteer

Ruthann Yamanaka
SVP, Chief People Officer at Outrigger Hospitality Group

* As of May 2023

How you can help



Visit us at [THEPANTRY.ORG](https://www.thepantry.org) to learn more.
